



KOMAND DIS

Data Inquiry System

One of the most important features of any resource accounting and chargeback system is the ability to retrieve information in a timely fashion. If a Financial Analyst must rely on the programming staff to design a SAS query or write a program, the value of the information may be lost by the time the Financial Analyst receives it.

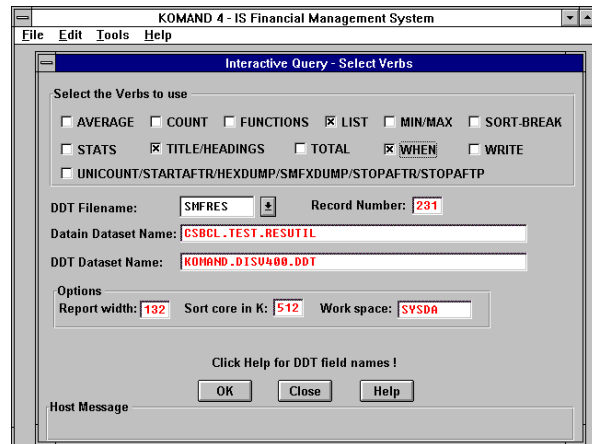
The **KOMAND Data Inquiry System (DIS)** is a full-featured report writer designed for end-users that have little or no programming expertise. By using DIS either in batch mode or interactively with the KOMAND ISPF menu system, it is possible for the user to easily create reports based on the costed master files, SMF, or any user defined input files. DIS can also be accessed using a PC GUI which lays on top of the ISPF menu system. (Shown at right.)

The entire “query language” used by DIS consists of twenty-five simple English-language verbs. Some examples are:

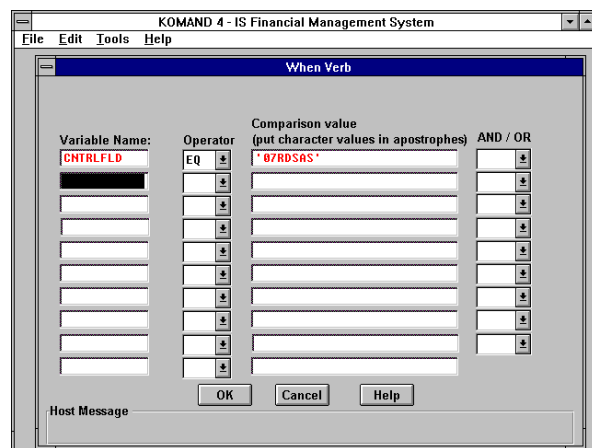
- **WHEN** – similar to the COBOL “IF”; it is used to limit the input data based on user selection criteria.
- **LIST** – list the fields that follow; DIS will format the output or the user may supply columnar headings and report positions
- **SORT** – sort on the field(s) specified; sort may be in ascending or descending order
- **DUMP** – used with the “WHEN” verb, to create a subset of the input data
- **WRITE** – DIS supports the creation of comma delimited files that may be downloaded to a PC for further ad-hoc reporting. These files may be used by any of the popular database, word processing or spreadsheet PC applications.

As a safeguard, DIS is “read-only” so users are unable to corrupt any input files. As distributed, DIS is able to read all KOMAND files and the majority of raw SMF records.

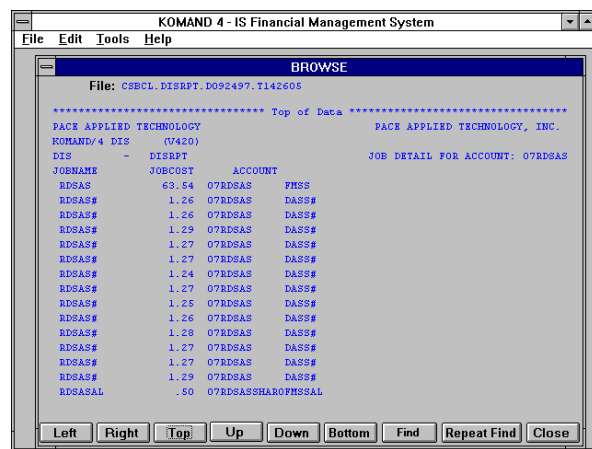
Documentation is provided to allow the end-user to create data dictionaries for reporting from existing in-house files.



Select commands from the main query build screen.



Enter parameters from query commands on subsequent screens.



The resulting report is presented in a window for viewing ease. After viewing, reports may be saved on the host or PC as a text report or data file.

